



# ASYTEC

INNOVATIVE ENGINEERING SOLUTIONS



## Crate Handling System

Asytec's Crate Handling System has been designed specifically for plant breeders to suit the Wintersteiger Quantum Harvester.

The system is based on using 5 off 36L produce crates commonly used in the industry. As stainless steel trays are used to locate the crates, other crates or bags may be used which fit within the confines of the machine..

The cabin door and pair of side access doors both have pneumatic rebound to drive the doors open if obstructed.

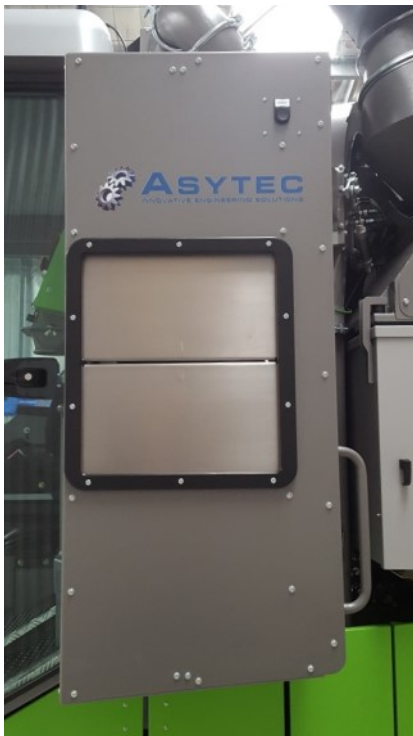
A DC Motor Gearbox with brake is used to drive the crate cradles around the stainless steel tracking plate whilst keeping the crates horizontal at all times. Nickel plated chain is used to drive and link the crate cradles together.

A TR Controller has been programmed to operate the functions of the crate handling system.

An Internal handle has been added to assist the operator when entering or exiting the cabin and an external handle have been added to assist the operator when loading the harvester onto transport.

All mild steel components have been primed and powder coated in the same colour as the harvester.

The width of the crate handling system has been kept to 2.4m for ease of transport.



Side Access Doors with Index Pushbutton to Load Empty Crates & Unload Full Crates

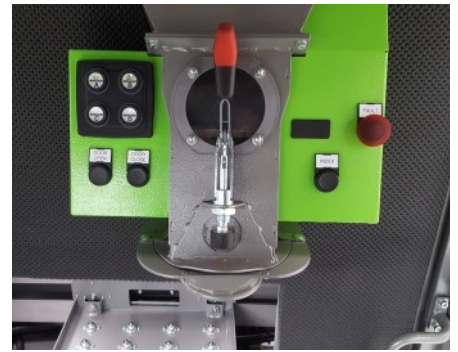


Stainless Steel Tracking Plate with 5 off Stainless Steel Crate Trays





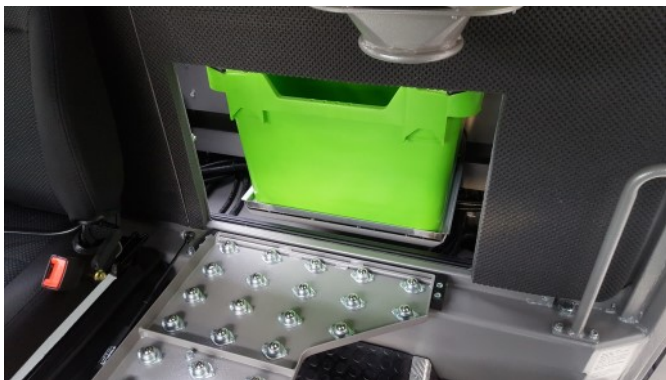
In-Cabin Drop Down Support Tray with Gas Strut



In-Cabin Controls Push Buttons  
Open & Close Cabin Door  
Index Next Crate  
Stop Pushbutton



Crate Tray Eject Cylinder



Crate movement on support tray whilst obtaining good operator access to load the seed sample into the paper bag below the chute. The passenger seat has been relocated to be more ergonomic and obtaining the most amount of room within the cabin.

ASYTEC PTY LTD		Telephone:	+61 (0)8 8383 7499
47 Douglas Gully Road Kangarilla SA 5157 AU		Mobile:	+61 (0)417 840 874
PO Box 235 Clarendon SA 5157 AU		Email:	brad@asytec.com.au
		Website:	www.asytec.com.au